

APPLICATION NOTE

PRODUCT SERIAL & BATCH NUMBERS

To give us traceability and enable us to establish warranty status on our products, we identify them with a serial number or batch number. These numbers appear on the product label of all main line products containing electronic components.

A Serial Number consists of nine numbers (e.g. 012400697):

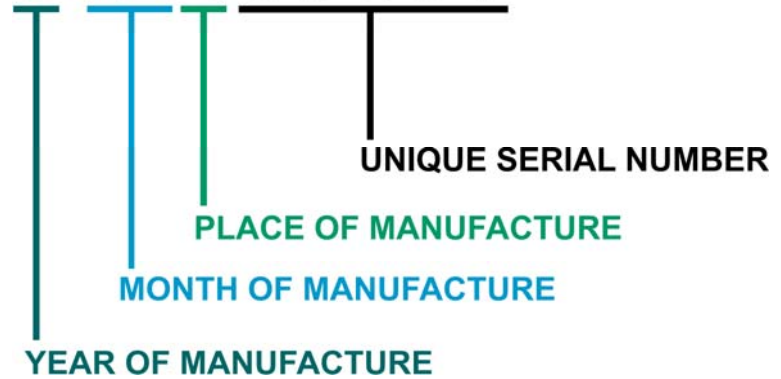
The first digit is the year of manufacture (e.g. 0 = 2000).

The second and third digits are the month (e.g. 12 = December).

The fourth digit is the place of manufacture (e.g. 1 & 2 = Hochiki Corporation Japan, 3 = Hochiki Corporation America and 4 = Hochiki Europe).

The next five digits are the unique serial number.

012400697



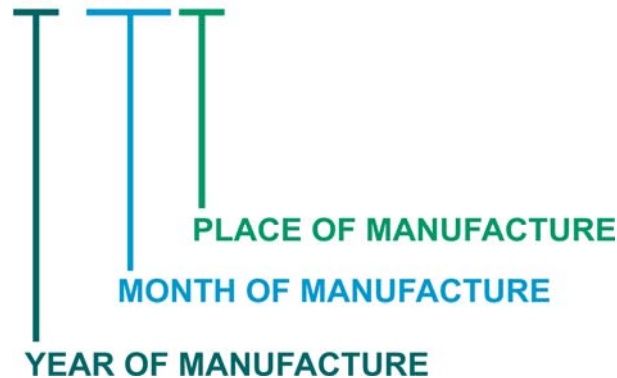
A Batch Number consists of four numbers (e.g. 0124):

The first digit is the year of manufacture (e.g. 0 = 2000).

The second and third digits are the month (e.g. 12 = December).

The fourth digit is the place of manufacture (e.g. 1 & 2 = Hochiki Corporation Japan, 3 = Hochiki Corporation America and 4 = Hochiki Europe).

0124



Hochiki Europe (UK) Ltd
Grosvenor Road, Gillingham Business Park,
Gillingham, Kent, ME8 0SA, England
Telephone: +44(0)1634 260133 Facsimile: +44(0)1634 260132
Email: sales@hochikieurope.com
Web: www.hochikieurope.com

Hochiki Europe (UK) Ltd. reserves the right to alter the specification of its products from time to time without notice. Although every effort has been made to ensure the accuracy of the information contained within this document it is not warranted or represented by Hochiki Europe (UK) Ltd. to be a complete and up-to-date description. Please check our web site for the latest version of this document.